



# STATIC BYPASS SWITCH

## STS207 LV

**In: 2 x 230V<sub>AC</sub>**

**Out: 230V<sub>AC</sub> (7.0kVA)**

### KEY FEATURES

- **1/4 x 19", 2U**
- **"Hot plug-in" design with backplane connection**
- **Optimized synchronization speed with digital PLL**
- **CAN-Bus interface**
- **Display for all main operating parameters, settings and measuring values**
- **Front-to-rear airflow with temperature-controlled fan cooling**
- **SNMP interface and monitoring by WEB-Browser included**

### APPLICATIONS

Static bypass switch for AC power supplies in all areas of industry, telecommunication, power generation and power distribution.

### PRODUCT DESCRIPTION

The new static switch of the series STS207 is a compact electronic switch. The digital PLL guarantees minimized synchronization time of inverter and mains frequency. Due to the high synchronization speed the unit can also be used together with diesel gensets as bypass mains supply. The transfer time between the two inputs is less than 4ms. Therefore the use within an IT environment is possible.

The STS monitors both incoming sources according to the voltage level, frequency and their synchronization. In combination with the inverter series INV215/222 the unit can operate in offline or online mode. This function is programmable at site. All main functional parameters and measuring values are displayed on the front side LCD panel. For highest reliability the internal circuits are supplied in redundancy by the bypass mains as well as the battery circuit of the AC system. For the communication between STS and inverter a CAN-Bus communication is used. The unit has an Ethernet interface for remote connection via SNMP protocol or WEB-Browser.



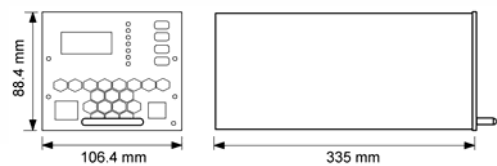
## TECHNICAL DATA

Type	STS207-230/230-24 V	STS207-230/230 LV
Article code	601-070-415.00	601-070-515.00
Nominal input voltage-Source 1	230VAC $\pm 20\%$	←
Nominal input voltage-Source 2	230VAC $\pm 20\%$	←
Redundant circuitry supply	19- 45VDC	38- 75VDC
Input frequency range	50/60Hz	←
Synchronization range	$\pm 2$ Hz	←
Efficiency	$\geq 99\%$	←
Mains input fuse	63A semiconductor protection	←
External mains fuse	Recommended; 32A gL or MCB characteristic B	
Nominal output voltage	230VAC; voltage range acc. to input values; switch over threshold $\pm 5$ to $\pm 20\%$ programmable	
Nominal output current	30.4AAC	←
Nominal switching capacity	7.0kVA	←
Overload capability	1000% for 10 ms (fuse tripping of 32 A gL is guaranteed)	
Output frequency	acc. to the input frequency	←
Transfer time	$\leq 4$ ms	←
LED signalling	Operation (green), Inverter OK (green), Mains OK (green), Load on Inverter (green), Load on Mains (green), Synchronization (green), Alarm (red)	
Main processor	16Bit Fujitsu	←
Monitoring functions	Voltage/frequency of sources 1 and 2; synchronization mains-inverter; over temperature; CAN communication lost; synchronization bus interrupted	
Configuration	Via front side operating buttons UP/DOWN/ENTER/ESC and LCD (4x16 characters); via SNMP and HTTP	
Fault signalization	Text message on LCD; alarm relay output	←
Communications interface	CAN-Bus, proprietary protocol; redundant synchronization bus; Ethernet 10Base-T	
Ambient temperature	Operation: $-20^{\circ}\text{C}$ to $+55^{\circ}\text{C}$ ; storage: $-40^{\circ}\text{C}$ to $+85^{\circ}\text{C}$	
Cooling	Fan cooling (temperature-regulated; monitored)	←
Climatic conditions	according to IEC 721-3-3 class 3K3/3Z1/3B1/3C2/3S2/3M2	
Max. installation altitude	$\leq 1500$ m	←
Audible noise	$< 45$ dBA	←
Type of construction	1/4 x 19", 2U	←
Dimensions (W/H/D)	106.4/88.4/335mm	←
Weight	approx. 2.2kg	←
Type of enclosure / Protection class	IP20 (front panel) / 1	←
Colour (front panel)	RAL 7035, black imprint	←
CE conformity	yes	←
Compliance to safety standards	EN60950-1; VDE0100 T410; VDE0110; EN50178; EN60146	
Compliance to EMC standards	EN55011/22 class "B"; EN61000-4 T2-5	←
Connections	Rear: AC inputs/output, DC input and signalization (DIN41612-M-connector); Front: Ethernet (RJ45), CAN (RJ11)	

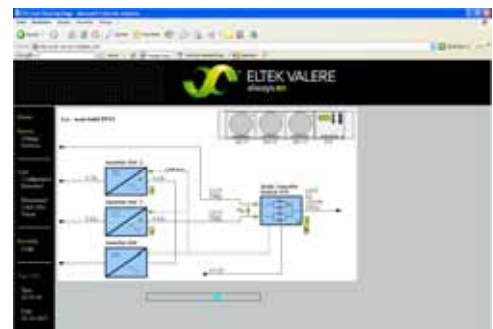
## OPTIONS

Article code / Designation	View
502-222-315.LV  Assembly set 19" sub rack 2U incl. backplane for 3pcs. inverters INV215 or INV222 and 1pcs. STS207-24 V or STS207 LV	

## DIMENSIONS



Monitoring with WEB-Browser included



DS\_STS207\_LV\_2007\_E\_R02 - Subject to change without notice - Eltek Valere Industrial GmbH

**Eltek Valere Industrial GmbH**  
Schillerstrasse 16  
D-32052 Herford  
Tel: +49 52 21 17 08 200  
info.industrial@eltekvalere.com  
www.eltekvalere.com

**Finland**  
Eltek Energy Oy  
Tel: +35 820 779 88 20  
**France**  
Eltek - SFEE SA  
Tel: +33 562 340 930  
**Germany**  
Eltek Valere Industrial GmbH  
Tel: +49 52 21 17 08 200  
Eltek Valere Deutschl. GmbH  
Tel: +49 694 2002 0

**Norway**  
Eltek Valere AS  
Tel: +47 32 20 32 00  
**Poland**  
Eltek Polska Sp. z o.o.  
Tel: +48 914 852 440  
**Russia**  
OOO Eltek St. Petersburg  
Tel: +78 123 321 117  
**Slovakia**  
Eltek Energy Slovakia s.r.o.  
Tel: +42 144 520 1607

**Spain**  
Eltek Energia S.A.  
Tel: +34 914 920 660  
**Sweden**  
Eltek Energy AB  
Tel: +46 862 664 20  
Aliab DC Systems AB  
Tel: +46 54 68 81 50  
**United Kingdom**  
Eltek Energy (UK) Ltd  
Tel: +44 144 22 193 55

**Australia**  
Eltek Pacific Pty Ltd  
Tel: +61 294 794 200  
**Bangladesh**  
Eltek Energy Pte Ltd  
Tel: +88 017 2097 097  
**India**  
Eltek SGS Pvt Ltd  
Tel: +91 124 221 00 18  
**Malaysia**  
Eltek Energy (M) Sdn Bhd  
Tel: +60 179 815 866/74 552

**Pakistan**  
Eltek Energy AS Pakistan  
Tel: +92 512 853 149  
**Philippines**  
Eltek Energy Incorporated  
Tel: +63 291 063 55  
**Singapore**  
Eltek Energy Pte Ltd  
Tel: +65 773 23 26  
**Thailand**  
Eltek Energy Incorp 2005 Ltd  
Tel: +66 294 369 05

**UAE**  
Eltek Middle East  
Tel: +97 148 871 176  
**China**  
Eltek Energy Technology Ltd  
Tel: +86 769 226 511 08  
**Hong Kong**  
Eltek Energy Ltd  
Tel: +85 228 982 689  
**Brazil**  
Eltek Sistemas de Energia  
Tel: +55 116 487 56 56

**Colombia**  
Eltek Energy LLC  
Tel: +57 162 216 91  
**USA**  
Eltek Energy LLC  
Tel: +18 154 599 100  
**Mexico**  
Eltek Energy International  
Tel: +52 55 53 74 1842  
**Peru**  
Eltek Energy de Peru SRL  
Tel: +51 142 192 71