

## ELTEK NETWORK UTILITY

Professional administration of IP network connected power system controllers



# ELTEK NETWORK UTILITY

Doc No 406001.003.DS3 - Rev 3

### PRODUCT DESCRIPTION

The Eltek Network Utility (ENU) is an Eltek-designed PC application that simplifies and improves the administration of Eltek products with IP network connectivity. It includes several functions and features for effective setup of network parameters, controller firmware update and controller power system configurations.

### KEY FEATURES

#### FREE VERSION

- Broadcast search for devices in network to quick and easy find all controllers in network.
- Firmware upgrade of controller to keep all controllers up to date with latest functionality through remote upgrade.
- Setup of network parameters (IP Settings)

#### LICENSED VERSION

- IP range search in network
- Search in sub network
- Store "recent search" IP ranges
- Bulk firmware upgrade of controllers
- Bulk configurations upload to controllers – XML file based

# ELTEK NETWORK UTILITY

## APPLICATION

Administration of hundreds, maybe thousands of IP network connected devices like a power system controllers might be complicated and time consuming. Eltek Network Utility is the perfect application for such tasks. It will save time during installation and operation with a simple and intuitive user interface.

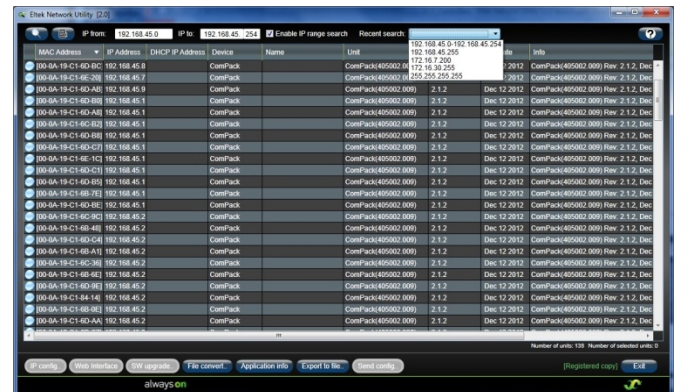


## REQUIREMENTS

- Windows XP/Vista/7 PC with .NET Framework v4.0
- Processor: 1GHz
- RAM: 512MB
- Disk space: 1.5GB

## SUPPORTED CONTROLLERS & PRODUCTS

- Compack, Smartpack2, Smartpack S and Smartpack WEB/SNMP
- BC, XC & NIC



## IP NETWORK EXAMPLE

