

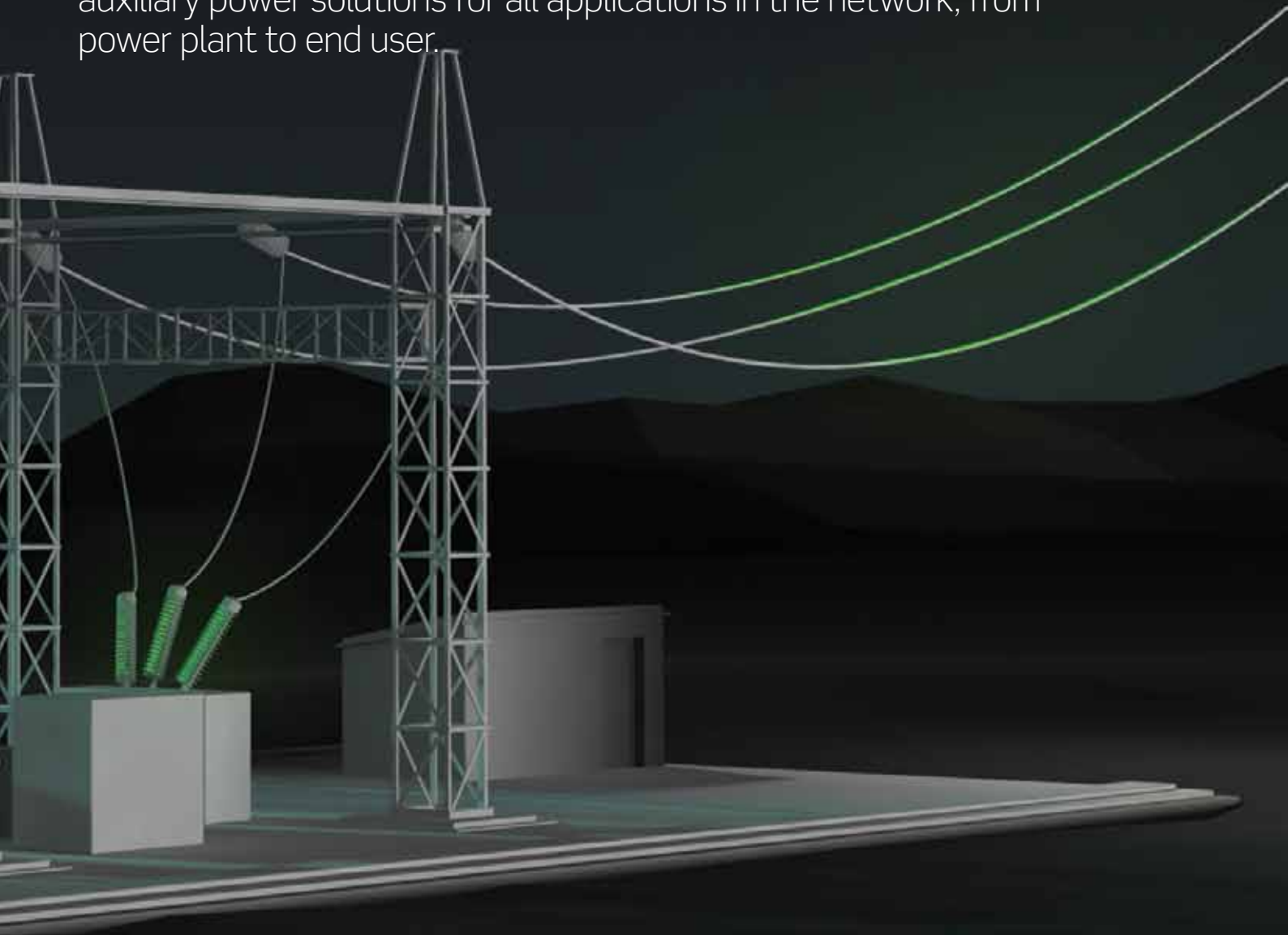
## POWER UTILITIES

MEETING ALL POWER REQUIREMENTS  
IN THE GRID

# DO YOU HAVE THE **POWER** **TO OPERATE YOUR GRID** **IN A SMARTER WAY?**

Whatever role your applications play in the power generation, transmission and distribution network, they will be part of the quest for a smarter and more efficient grid delivering more value to its users.

At Eltek, we combine power utility industry insight with leading-edge power conversion expertise. We offer smart and efficient auxiliary power solutions for all applications in the network, from power plant to end user.



# HE HIGH EFFICIENCY

Reduces energy use and cost

## Smart

Built-in intelligence

## Built-to-fit

Exactly what you need

## Serviceable

Hot-swappable modules, short MTTR

## Green

Reduces environmental impact

## Reliable

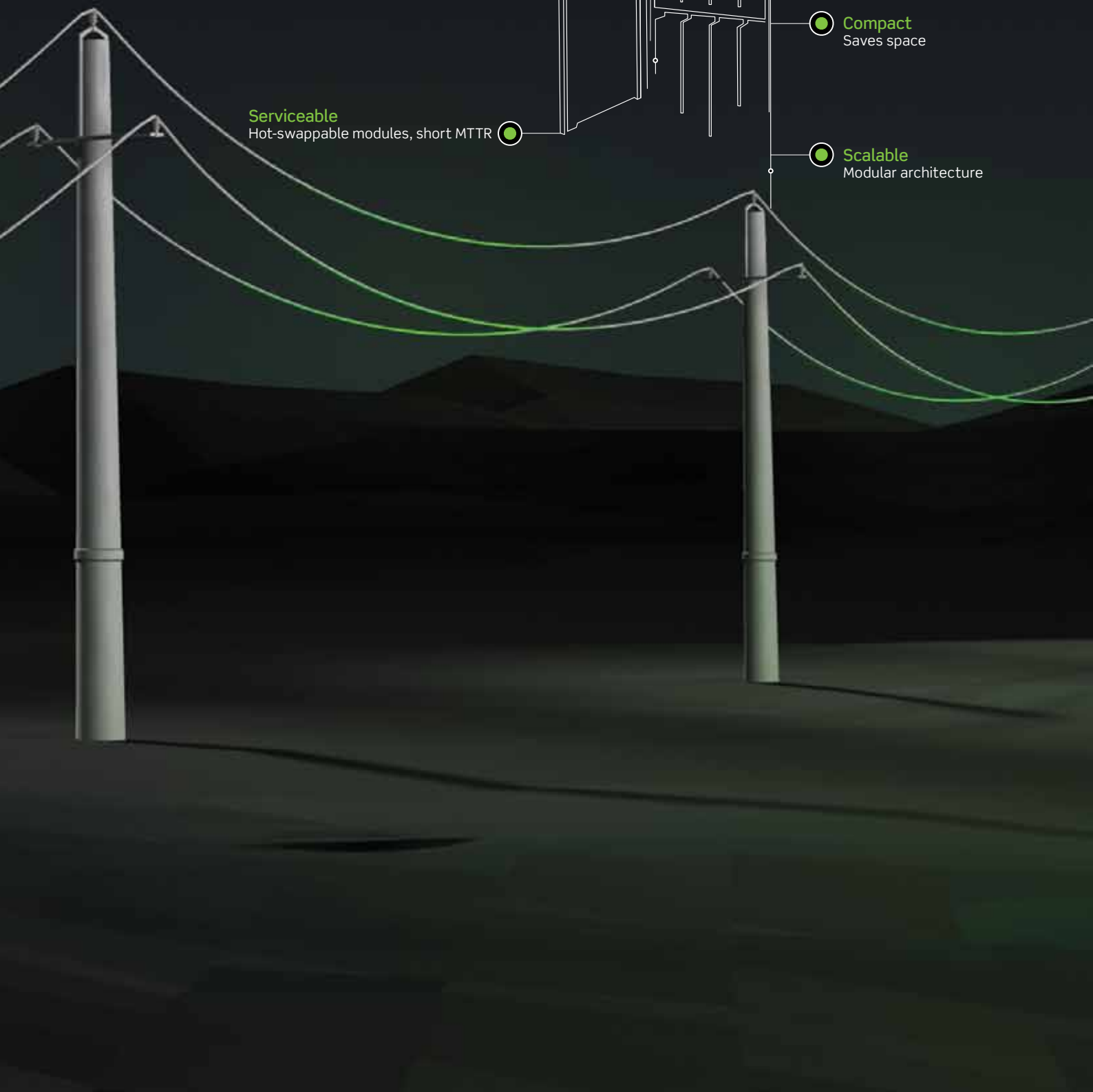
Proven quality

## Compact

Saves space

## Scalable

Modular architecture



# ELTEK **POWER** SOLUTIONS

## **SMARTER POWER FOR A SMARTER GRID**

Stable, safe and uninterrupted supply of auxiliary power is a basic requirement for efficient operation of critical grid applications. Eltek systems offer more: built-in intelligence that enables smart, value-creating operation and highly efficient power conversion that saves energy and cost, thus reducing the environmental impact.

### **BUILT-IN INTELLIGENCE**

Eltek's systems are designed to adapt to varying operational conditions. With extensive communication capabilities, an advanced controller unit and intuitive monitoring software, the operation of Eltek systems can be fine-tuned to deliver optimized performance under all conditions. From one screen connected to the Internet, the operator has full overview and can optimize the operational parameters of separate or multiple networked systems, down to the smallest detail.

### **HE HIGH EFFICIENCY**

Eltek's unique power conversion technology is the result of decades of intensive research and technical breakthroughs, and has defined "high efficiency" in the power industry for years. Our broad range of rectifiers and inverters provides unmatched efficiency, resulting in significant cost savings.

#### **HYDRO POWER PLANT**

- > emergency oil pumps for turbine
- > automation & data transmission

#### **WIND FARM**

- > alarm and control systems
- > data transmission
- > emergency lighting

#### **THERMAL POWER PLANT**

- > emergency lighting and fire alarm back-up
- > plant control and automation equipment

## GREEN

High efficiency means less energy lost in the power conversion process. In turn, this reduces power consumption and the associated environmental impact, giving your business a greener profile.

## RELIABILITY

Eltek's continuously improving modern switch-mode technology and products have performed in the field for more than 40 years. They are designed and certified to meet the highest immunity levels.

## POWER DENSITY

Eltek's conversion technology is renowned for very compact and space saving design, with high output power dense modules.

## SCALABILITY

Eltek's power systems are inherently scalable. They can meet both current and future power needs thanks to the modular architecture.

## SERVICEABILITY

Another advantage offered by the modular architecture is excellent serviceability and very short MTTR. Easy maintenance and hot-swap of parts ensure continuous operation of your service, thus protecting your revenue stream and reputation.

## BUILT-TO-FIT

From a number of predefined off-the-shelf systems, customized solutions can be implemented for a variety of applications and handle wide ranges of input and output voltages.

## FULL SERVICE

Eltek's power solutions are backed up by extensive support and service, delivered by dedicated power professionals in Eltek's organization.

### RESIDENTIAL AREA

- > substation gear operation
- > local and remote control
- > data transmission

### INDUSTRIAL AREA

- > automation and safety systems

### SOLAR FARM

- > local and remote monitoring and control

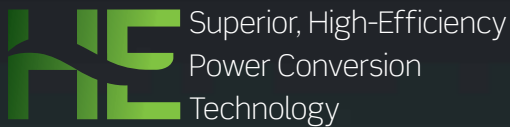
### FACTORY

- > process control & supervision equipment

### SUBSTATIONS

- > HV & MV switchgear operation & relay equipment
- > automation, data transmission, remote control equipment

More power from renewable energy sources and the ability to use available energy more efficiently are crucial factors for a sustainable energy supply in the future. Eltek's IBB (Industrial Building Block) power solution concept contributes significantly on both accounts. IBB helps the power utility industry deliver on the promise of a greener future – today.







### **IBB - INDUSTRIAL BUILDING BLOCKS**

IBB systems use less energy to support the production, transmission and distribution of electrical power. They are based on modern switch-mode technology and specifically Eltek's industry-leading HE power conversion technology, which reduces both energy consumption and cost. Pre-engineered systems and the modular design ensure both great flexibility, short lead times and easy installation.

# ELTEK SYSTEMS AND MODULES

Eltek systems are used in power utility applications worldwide. With a variety of high-performance power converters and system building blocks available, systems from 100 W to several 100 kW can be realized.



## FLATPACK2 IBB

The IBB power systems and building blocks are built around our Flatpack2 rectifier and designed for applications such as switchgear control, telecom, emergency lighting, alarm systems and various industrial applications.

**APPLICATION EXAMPLE: GRID STATION**

### FEATURES

- Pre-engineered systems and building blocks
- Optional built-in VRLA batteries
- Optional outdoor cabinets



## FLATPACK2 IBF AC/DC

A complete 19" Power Core pre-engineered and tested. Available as 24 to 125 and 220 VDC power supply, including power rack for 4 to 8 FP2 rectifiers, and various controller, distribution, and battery management options.

**APPLICATION EXAMPLE: SUBSTATIONS**

### FEATURES

- Modular rectifier system, in power rack
- Support for 24-220 VDC output
- Built-in controller and distribution options



## IBF DC/AC-INV

A complete 19" Inverter system, available for an input voltage range of 48 to 220 VDC, incorporating INV222 modules & STS207 Static Switch. This power core can be incorporated in various types of cabinets.

**APPLICATION EXAMPLE: THERMAL POWER PLANT**

### FEATURES

- Modular, pre-engineered power core
- Option with static switch
- Wide DC input voltage range



## FLATPACK2 IBF DC/DC-HV

19" Power Core available as 24 to 125 and 220 VDC power supply, including power rack for 4 to 8 FP2 rectifiers/converters with individual AC or DC feed, and controlled by Smartpack2 with color display and remote monitoring facilities.

**APPLICATION EXAMPLE: FACTORY**

### FEATURES

- DC/DC Building Block, stand-alone or integration versions
- Individual DC input
- Bulk-Feed output or integrated distribution



## FLATPACK2 WALLBOX

The Flatpack2 Wallbox is built around our Flatpack2 rectifier. Its compact design and simple installation make it a powerful wall-mounted DC power supply package.

**APPLICATION EXAMPLE: SOLAR FARM**

### FEATURES

- Support for 24-125 VDC output
- Bulk-Feed or integrated distribution
- Digital controller with color display



## FLATPACK2 INTEGRATED 19" 2U

The 2U power core can be used as a stand-alone system both for AC and DC (85-300VDC) input. The system has individual AC or DC feed with a DC bulk output. It comes as standard with Smartpack2 controller and I/O unit.

**APPLICATION EXAMPLE: INDUSTRIAL AREA**

### FEATURES

- Individual feed. AC or DC input voltage, various DC outputs
- Can be used as a stand-alone system
- Integrated controller with color display, and remote monitoring





### MICROPACK SYSTEM

The Micropack System is convection cooled, designed for less power hungry applications, but still with system functionality options to match any requirements. Use as stand alone or in a flexible off-the-shelf configurable system.

**APPLICATION EXAMPLE: CITY SUBSTATION**

#### FEATURES

- DIN-rail mountable, compact & shallow
- Configurable off-the-shelf delivery
- Various DC output versions



### MICROPACK WALLBOX

The Micropack Wallbox have been designed for industrial and telecom applications with power requirements in the range of 120 - 1000W. With its compact design and simple installation and optional internal backup batteries, it makes it a really "micro" DC backup system.

**APPLICATION EXAMPLE: SUPERVISION & ALARM SYSTEMS**

#### FEATURES

- Support for various DC output voltages
- Bulk-Feed or integrated distribution
- Digital controller with or without display



### FLATPACK S 24V/3X2kW

With a depth of only 265mm the Flatpack S System will fit in most cabinets or racks, and is ideal for powering supervision and safety equipment. It has built-in redundancy for reliable operation. Available with Marine certifications and SIL3 versions.

**APPLICATION EXAMPLE: ON & OFF-SHORE WIND FARM**

#### FEATURES

- Compact and shallow (265mm systems depth)
- High power density
- Accepts DC input (DC/DC converter)
- Alarm relay output – basic monitoring without controller possible



### SMARTPACK2 CONTROLLER

Smartpack2 is built on the proven software platform that is used in Smartpack, making it reliable and robust. It has enhanced interfacing through 3.2" TFT high resolution color display and local alarm LEDs. It is used in many of our systems bringing un-matched and extensive features, including battery management.

**APPLICATION EXAMPLE: ALL SYSTEMS WITH MONITORING & COMMUNICATION**

#### FEATURES

- Ethernet for remote or local monitoring and control via WEB Browser
- Intelligent battery management



### FLATPACK2 HE RECTIFIER

The most efficient power conversion module in the industry! Since the launch the Flatpack2 family has expanded to cover a wide range of power ratings and voltages with always a high power density and proven reliability.

**APPLICATION EXAMPLE: IN AC/DC OR DC/DC SYSTEMS**

#### FEATURES

- Application flexibility, 2 – 192 kW
- Accepts DC input (DC/DC converter)
- Global compliance (CE, UL, NEBS)
- Patented technology
- Digital controllers



### MICROPACK MODULE

The Micropack is a convection cooled rectifier for less power hungry applications, but still with system functionality options to match any requirements. Use as stand alone or in a flexible off-the-shelf configurable system.

**APPLICATION EXAMPLE: PS OR CONVERTER FOR CONTROL CABINETS**

#### FEATURES

- Compact and shallow (149 mm deep)
- DIN rail mountable
- On-site configurable
- Stand-alone option
- Accepts DC input (DC/DC converter)
- 12, 24-30, 48 VDC output versions



### COMPACK CONTROLLER

"All-in-one" plug-in controller. Comprehensive functionality in a small box integrating Ethernet for remote or local monitoring and control via WEB browser.

**APPLICATION EXAMPLE: MONITORING & COMMUNICATION FOR SMALL PS**

#### FEATURES

- Ethernet port with HP Auto MDI/MDI-X for detection and correction for straight-through and crossover cables
- SNMP protocol with TRAP, SET and GET on Ethernet, Email of TRAP alarms
- 3 programmable relay outputs for "traditional" remote correction for straight-through and crossover cables

# THE POWER CONVERSION SPECIALIST FOR MORE THAN 40 YEARS

Eltek has more than 40 years of experience as a power conversion specialist. Driven by a strong ambition to push the frontiers of technology, our hallmark has always been an ability to develop power conversion products that set the industry standard when it comes to efficiency, power density and flexibility.

Eltek is a power specialist with true global coverage, while our capabilities and capacity around the world are firmly rooted in the local business environment. This enables us to serve customers in the best possible way, whether they are global, regional or local.



## SERVICES THAT MAKE A DIFFERENCE

With extensive expertise, our global organization and the commitment of our power professionals as a basis, our solutions and services include site surveys, project management, installation and commissioning, maintenance, battery maintenance, emergency services and training.



## EXPLORE ELTEK POWER UTILITIES ANIMATION



### ELTEK ANIMATION

This animation gives you a 3 minute summary of our offerings in the industry. Available on Smartphone, tablet and PC.

No scanner application installed?  
Search Apple Store or Google Play for free QR scan app.



always **on**



[www.eltek.com](http://www.eltek.com)